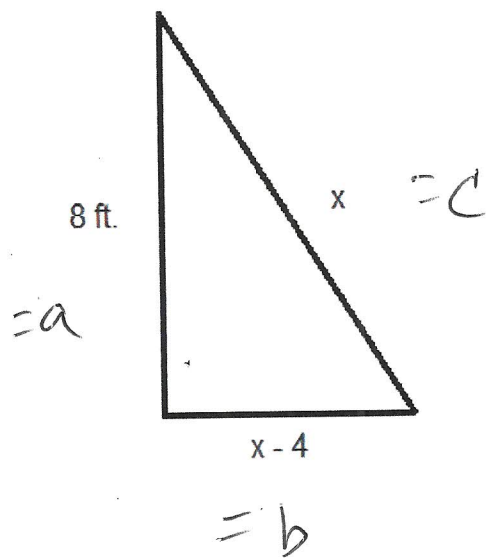


1. A window is 8 ft. from the ground. The distance from the ladder to the wall is 4 ft. less than the length of the ladder. How long is the ladder?



$$8^2 + (x-4)^2 = x^2$$

$$64 + x^2 - 8x + 16 = x^2$$

$$80 - 8x = 0$$

$$\frac{80}{8} = \frac{8x}{8}$$

$$x = 10 \text{ ft}$$

2. Find the values where the expression is undefined:

$$\frac{x-7}{x^3-9x} = \frac{x-7}{x(x+3)(x-3)}$$

$$x \neq 0, -3, 3$$