

do more  
18 39, 44, 45  
2, 1/2, 7, 11, 12, 13, 15, 17, 20, 23, 24, 27, 30, 31, 35, 36, 37, 38,

2.  $A = \{2, 5, 7, 9, 13, 25, 25, 26\}$

a)  $n(A) = 7$

b)  $7 \in A$  T

c)  $9 \notin A$  F

d)  $20 \in A$  T

7.  $A = \{1, 2, 3, 4, 5\}$   $B = \{4, 5, 6, 7, 8\}$

a)  $A \cap B = \{4, 5\}$

b)  $A \cup B = \{1, 2, 3, 4, 5, 6, 7, 8\}$

c)  $A' = \{0, 6, 7, 8, 9\}$

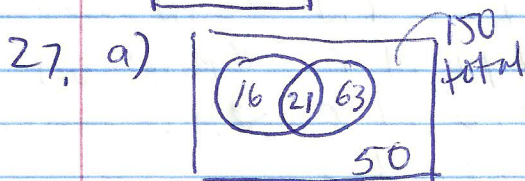
d)  $B' = \{0, 1, 2, 3, 9\}$

11. {Fri}

12. {M, Tu, W, Th, F, Sat, Sun}

13. {M, Tu, W, Th}

15. {F, Sat, Sun}

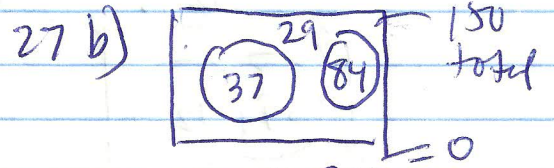


$100 = 37 + 84 - n(A \cap B)$

$100 = 121 - n(A \cap B) \quad 21$

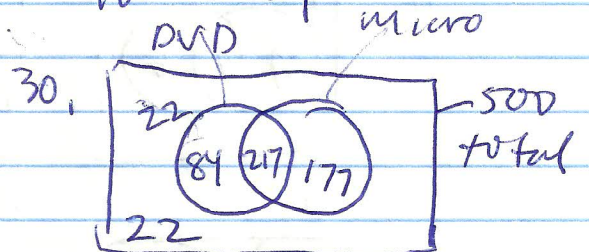
$A \text{ only} = 37 - 21 = 16$

$B \text{ only} = 84 - 21 = 63$



$121 = 121 - n(A \cap B)$

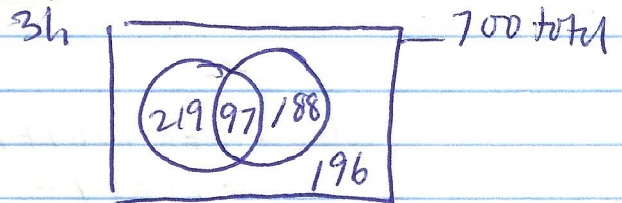
no overlap



$301 - 217 = 84$  DVD only

b) % D or M

$\frac{84}{478} = 17.6\%$   
 $\frac{478}{500} = 95.6\%$



$n(A \cup B) = 700 - 196 = 504$

$n(A \cap B) = 285 + 316 - 504 = 97$

b)  $97/700 = 13.9\%$

35. 7 states begin w/ M

$n(M') = 43$

36.  $n(M \cap I) = 0$

37. R = ends w/ R,  $n(R) = 4$

$n(R') = 8$

38.  $(J \cap V) = 0$

39.  $n(J \cup V) = 5$

{Jan, June, July, Feb, May}

44. 22

12 face + 13 chords - 1 overlap

45. 6 {J, K, Q of clubs/spades}