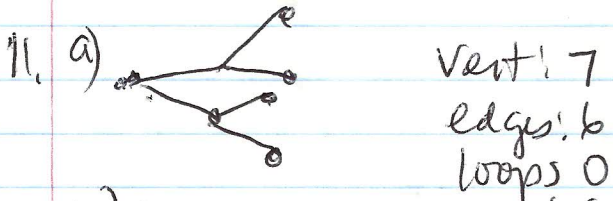
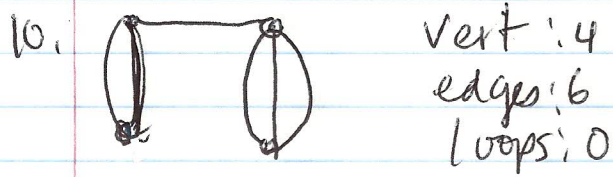
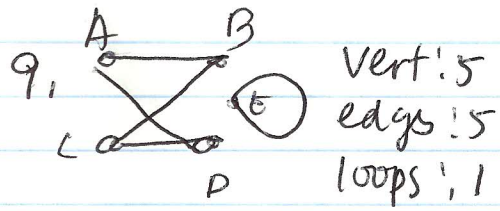
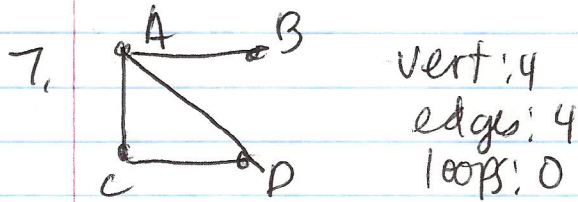
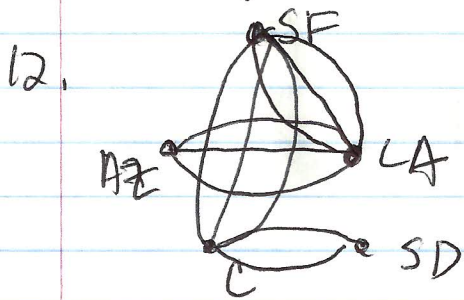


9. 1/7, 9, 10, 11, 12, 16

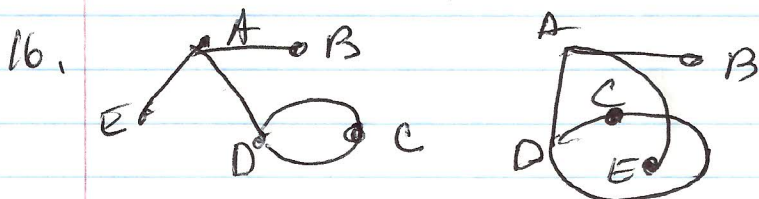


b) Loops are impossible - you can't be your own parent.



a) vertices: 5
edges: 11
loops: 0

b) loops impossible - a team can't play itself.



a) both have 5 vertices, same edges and same connections
 A connects to B, E, D; E }
 B - A }
 E - A }
 D to A, C }
 C to D }

The graphs are identical

